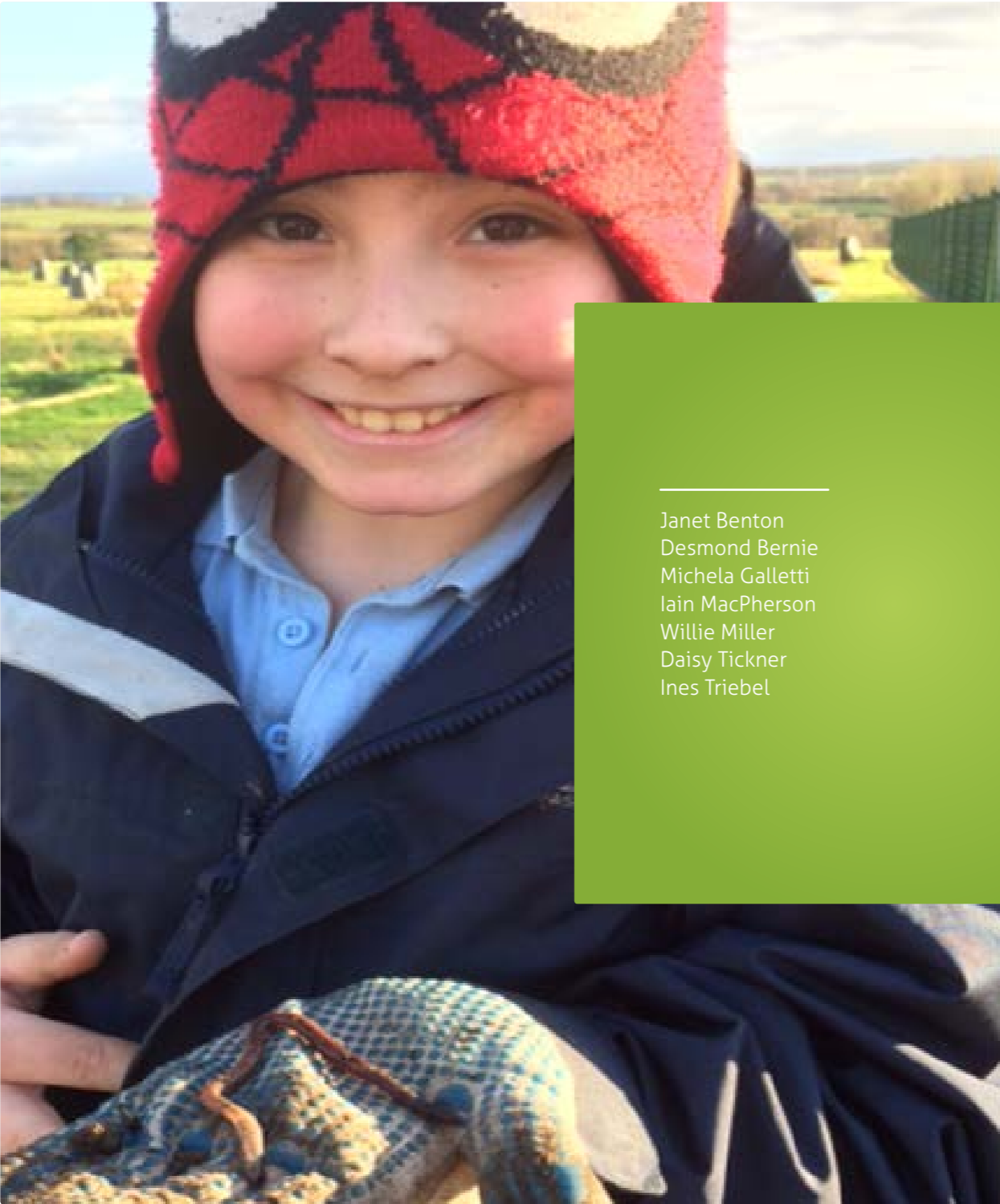


DECEMBER 2018



AYR NORTH MAKING PLACES



Janet Benton
Desmond Bernie
Michela Galletti
Iain MacPherson
Willie Miller
Daisy Tickner
Ines Triebel

Willie Miller Urban Design
Icecream Architecture
Benton Scott-Simmons Landscape Architecture
Kevin Murray Associates

People Directorate
South Ayrshire Council
County Buildings
Wellington Square
Ayr KA7 1DR

Willie Miller Urban Design
20 Victoria Crescent Road
Glasgow Scotland G12 9DD



CONTENTS

1	INTRODUCTION	1
2	ENGAGEMENT	3
3	AREA ANALYSIS	9
4	EMERGING THEMES	21
5	TOWARDS A STRATEGY	23
6	FIRST STEPS	41
7	CONCLUSIONS AND RECOMMENDATIONS	53
8	APPENDIX A: EXPERIENCE ELSEWHERE	57
9	APPENDIX B: FUNDING SOURCES	66

WHAT PEOPLE HAVE SAID

We heard many positive comments about the potential for new greenspace uses and facilities in Ayr North - as well as some genuine concerns about future proposals.



WHITLETTS RESIDENT

"I'm concerned about encouraging non-resident pedestrians into the site, as I believe it would encourage anti-social behaviour and may increase the possibility of dishonesty and vandalism"

AYR NORTH RESIDENT

"We need to do something for the future so our kids can have happy, safe green-spaces in their lives"



WALLACETOWN RESIDENT

"We have a future aspiration to take over an empty unit as a food co-op or community shop, just not sure how to get there yet"



a typical area of Ayr North open space, close to the site of the former Whittletts Primary School

1 INTRODUCTION

In late 2017, South Ayrshire Council (SAC) applied to the Scottish Government for financial assistance under the Making Places programme for a project provisionally entitled Our Places in Ayr North. The project aimed to:

- Engage with residents in Ayr North around streets, spaces and green spaces and their potential future use by the community. The former Whittletts Primary School is the location of new Council housing, and there is scope to participate in the design of open spaces linked to the development such as play and keep-fit space or potential community garden and allotment space.
- Develop continued participation among the local community in beneficial projects for future cohesion and resilience by identifying a series of short, medium and long-term projects to utilise available space or buildings for green gyms/gardens/ allotments or spaces for micro business and social enterprise developments.
- Achieve maximum participation by contacting local nurseries and Primary Schools (4) by building on existing activity undertaken by Ayr United Football Academy and other partners. Parents and children could be asked to participate around the theme of healthy eating and active living, so in addition to what is happening in schools around these subjects, the project can help to identify assets in the wider community.
- Set up a longer-term process for transformational change in Ayr North by enabling the community to establish a longer-term 'vision' or action plan to commit to with the support of local partners such as Ayr United Football Academy (AUFA) which is an outreach arm of the local football club. AUFA have been successful at engagement with harder to reach sections of the community around a climate change project and have already won over the support of local parents through existing schools-based work.

This proposed project acknowledged the experience of SAC in taking part in charrette type engagements. The challenge is to achieve a significant level of sustained engagement. To do this SAC expected that engagement has to develop over a more extended period than a traditional charrette and this was a valuable learning point

from both the Maybole and Prestwick Town Centre Charrettes.

The draft programme for the work suggested that the elements should be:

- engaging with schools, parent councils, community council, community associations and locality planning groups
- identifying local stakeholders to form a steering group
- carrying out pre-event engagement at local schools and in local organisations including running workshops on specific topics such as community gardens, allotments, active travel
- identifying a 2-3 day window for people to showcase their discussions and findings including attending a local 'Community Choices' or Participatory Budgeting event in late March 2018

OUR APPROACH

- to create an ethos, desire and impetus for the development of participatory placemaking in Ayr North which outlives the short timescale of this project and continues well into the future
- the existing and potential open space assets of the area represent a firm basis on which to build community interest and active involvement in placemaking futures
- developing community interest in placemaking could naturally embrace greenspaces but could also develop into small-scale social enterprise activity around active travel, food and health





2 COMMUNITY ENGAGEMENT

Ayr North Decides participatory budgeting event (03.03)

The participatory budgeting event provided the opportunity to meet members of active groups rooted in green spaces across the Ayr North locality and make connections with people interested in their local green areas. An area-wide mapping exercise was undertaken, allowing people to identify spaces that they knew and add comments on how these were either used, needed further development and maintenance. Ideas for future uses were also recorded.

Newton Shore Community Garden meeting (13.03)

The Newton Green Residents Association invited the team to an inception meeting for a community garden that they are hoping to establish on Weir Road. Following a presentation by representatives from Girvan community garden, a roundtable discussion about site access and emerging issues took place, and the idea of having a community event on the site floated, to build interest in and momentum behind the project. As attendance from members of the community was low this, this activity was to be held off

pending further meetings, as well as soil testing and the group updating its constitution to enable a Community Asset Transfer of the site.

Scoping event (19.03)

Delegates from groups across Ayr North came together for a full introduction to the project, presentations of aspirational projects, and extensive mapping workshops of existing and proposed greenspace assets in the area. This event facilitated conversations between interested parties that might not have otherwise come into contact and began to identify the particular needs of Ayr North and helping to define the programme for the project. The other key outcome was the formation of a steering group, who could direct the project and initiate a future lead beyond the immediate study period.

Meetings with AHEAD and SAC's Cultural Planning Co-ordinator (25.04)

The AHEAD Community Builders have undertaken an extensive asset mapping exercise in the area

as part of the Tandem project and are positively involved with its communities. Having them involved in both the steering group and on the ground with engagement activities was seen to be invaluable for the project's development. Tapping into AHEAD's local knowledge, it was possible to identify key contacts and arrange community events in the project calendar.

Lochside Youth Group workshop (25.04)

This workshop planned to engage a P6-S1/2 level youth group in their local green spaces through discussion and mapping exercises, followed by a walk around some of these spaces to record the group's responses to them. The group were younger than anticipated and struggled to engage with the workshop with map reading a



South Ayrshire Council was involved with youth arts activity in the area during the South Ayrshire Place Partnership and so was able to share details of ongoing artist residencies, stalled space projects and youth art exhibitions in the project area.

particular difficulty. The walk identified the need for play spaces for older children, as well as softened outdoor areas in which to meet and spend time. Shelter and seating provision were priorities.

Whitletts pre-flag-raising engagement (10.05)

Knocking on doors to raise awareness and deliver flyers for the upcoming flag-raising event on the former

Participatory Budgeting
Event: March 2018

Whitletts Primary School site led to interesting discussions with residents about the previous use of the site, issues with its current use and concerns over its future capacity as a community space.

Steering group meeting (17.05)

A well attended first meeting of the steering group dealt with questions around the plans for the Whitletts

Whitletts flag-raising (24.05)

A community event held on the Whitletts Primary site, with children's games, flag-making and a barbeque drew an interested crowd of diverse age groups. The event explored the future of the site and its links with the new housing development next door. Members of a residents' association, the James Brown Avenue Action Group, were present and expressed interest in



Scoping Event:
March 2018

Primary School site including difficulties in accessing groups in certain areas; using local events as ways of contacting more local people; updates on the greenspace audit being undertaken; current and future locations of shipping containers of gardening/ DIY equipment that had been obtained; the importance of linking up routes to and from green-spaces; and potential employability or social enterprise opportunities.

helping to develop a vision for the site. A future meeting date was agreed.

Dalmilling Primary Allotments opening (06.06)

Pupils involved in the eco-committee at Dalmilling Primary have established an allotment plot at the Overmills Allotments and invited the team to their official opening event. Parents, grandparents, teachers and council members were also in attendance, and the pride that everyone



had in the results of the children's hard work was evident. The allotment project has been primarily undertaken by pupils under the guidance of the Head Teacher and fully integrated into the school curriculum. From this, the children have developed a great connection with, and understanding of, their environment and the opportunities that it can afford them. A meeting with the Head Teacher was

Meeting with the Head Teacher of Dalmilling Primary + Eco-committee (21.06)

The Head Teacher talked about the initial process of establishing the allotment programme at Dalmilling and invited members of the eco-committee to speak about their experience of it. Seeing the capability of those involved and what a space like that could do now and in the future,



arranged to discuss how the logistics and funding of the allotment had worked, in the hope that it could be worked into a set of resources and guidance for other schools to undertake similar programmes.

the team were asked to run a design workshop with the pupils to help develop and ensure the sustainability of the programme.

Proposed Weir Road Community Garden site visit (21.06)

AHEAD Community Builders led a site visit to the proposed Weir Rd community garden and updated the team on issues such as access, soil testing and the community support for the idea. An event or open day sometime in future weeks was thought to be the best next step.

James Brown Avenue Residents meeting (21.06)

Following conversations at the Whitletts Flag-raising event, the team met some of the James Brown Avenue Action Group, a residents' association from the immediate locality of that site. The intention had been to start a co-design process for the greenspace focusing on the proposal to install outdoor gym equipment there, but it

environment. The children engaged well with a large-scale aerial map of the area, identifying their homes, schools and recreation spaces before suggesting what they would like to see in the area - how spaces could be better used and made more attractive to children of their age, especially with unsupervised use.



became evident that there was a greater desire within the group to have a community hub space, in conjunction with or instead of the gym.

Lochside Youth Group workshop (21.06)

Primary school pupils attending drama club sessions at the Lochside Community Centre took part in the mapping and visioning of green spaces, their uses and daily journeys in their locality, to build up a picture of how young people use their outdoor

Craigie Greenspace Group meetings (26.06, 21.08)

The team were invited to attend the monthly meetings of the Craigie Greenspace group, who are pursuing several projects in the area. Regular litter picking and managing the Ayr Academy Horticulture Group are their core activities while establishing a new play park, a community hub space and replanting the pansy walk along the River Ayr are current priorities. The Group updated the team on these projects and useful contacts for their development were invited to some of the group's meetings.

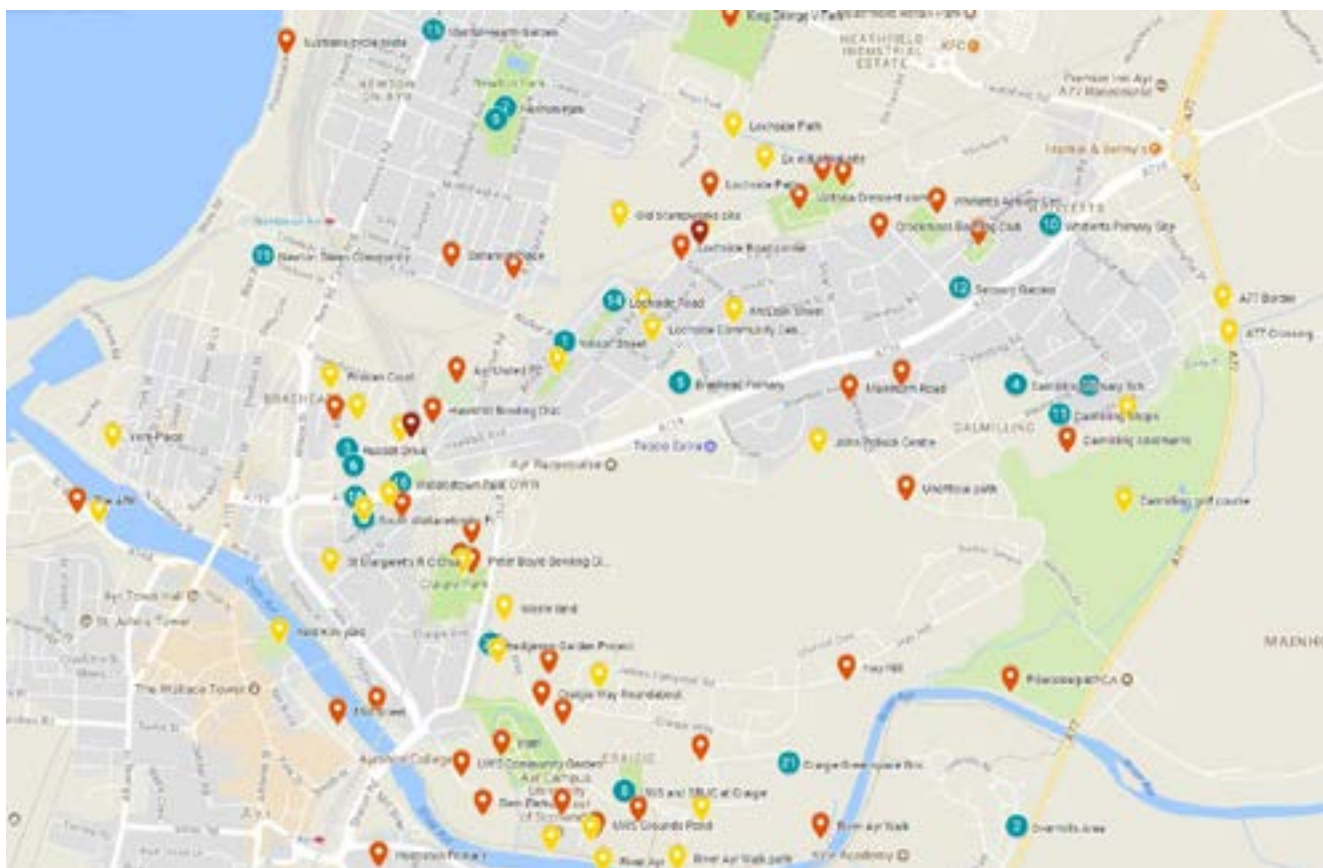


Whitletts Action Group meeting (17.07)

At a second meeting of the James Brown Avenue residents, a complicated group dynamic led to a lack of ability to come to any decisions about the future of the potential green space and associated hub building.

Dalmilling Primary Eco-committee workshop (03.09)

New and existing children involved in the Overmills Allotment project through the eco-committee at Dalmilling Primary came together with the team to discuss and visualise plans for the future of their plots. They considered the next steps in planting, expansion of the site and how to further strengthen the project's links with the school curriculum and nurture programme.



Lochside Fun Day (08.08)

The team dropped in on the Fun Day at Lochside Community Centre and spoke to many people about their aspirations for the area. At this well-attended event, there was a tremendous atmosphere and enthusiasm for community work.

Weir Road Community Garden Co-design workshop (06.09)

To establish a brief for this area, members of the community from the area around the proposed Weir Road Community Garden took part in a co-design hack of the space and to determine what physical and social outcomes might be. Despite being at a very early stage, it was essential to gather a diversity of voices and opinions while creating a sense of cohesion around the project's development.





greenspace at James Brown Avenue with palisade fencing around play area

3 AREA ANALYSIS

We surveyed greenspace types in Ayr North according to their recreational function, ecological contribution and spatial characteristics. Six greenspace types are present in the area.

1) Incidental green spaces tend to be laid out as open lawns, sometimes with scattered groups of trees. They are pleasant green interludes within built-up areas, but they lack a clear purpose and with no seating or other amenities to encourage social use, they tend to be unused.

2) Semi-public gardens are larger public garden areas that have a degree of shelter which gives them an intimate feel. They often have facilities such as seating and play equipment, although the condition of these varies throughout the area. They typically contain large areas of mown grass and so do not make a significant ecological contribution. However, if they are enclosed, overlooked and flexible, they may be favourite social spaces for play for children.

3) Public parks accommodate a range of formal and informal recreational activities in a designed environment. Public parks provide facilities such as

seating, play equipment and open lawns, and sometimes include additional features such as planting displays, water features or shelters. Typically they experience more frequent use at weekends and holidays than during the working week.

4) Informal greenspaces are open parkland areas without a clear boundary or identified purpose. They lack a definite social function and do not contribute significantly to ecology. They are used informally for dog walking or as a shortcut for people moving about the area. People seldom linger in these spaces.

5) Formally defined and managed green-spaces include allotments, sports facilities and school grounds.

6) Linear connecting greenspaces - there are also some cycle routes and long distance footpaths around the perimeter of the North Ayr study area which provide an additional leisure opportunity.



Key assets and challenges

The quality of the different types of green space varies considerably across the study area. Some spaces are popular despite having few amenities or being modest in character, while others despite seeming to be attractive are less well-used. There is a considerable amount of green space in the area, but much of it is not very useful.

Popular parks and gardens include Craigie Park, Lochside Community Centre play park and the play park at Thornyflat Place. Well-used formal facilities include:

- Ayr Racecourse
- Dalmling Golf Course

- Somerset Park Football Ground
- Pro Soccer Ayr

Established and thriving growing-gardens include Dalmling allotments and Craigie allotments.

The riverside walks and cycle paths are attractive and well-used, albeit requiring upgrading in places.

Likewise, the primary school playgrounds are generally in good condition, with a range of play and sports facilities such as ball courts, kickabout pitches, painted games areas, seating and nature areas. Spaces that are poor quality or underused include the green spaces surrounding



top: greenspaces near Craigie Allotments

above: greenspaces at James Campbell Road



the John Pollock Centre and the green area at Whitletts (south and east of Pro Soccer Ayr). Some enclosed green spaces, (for example, “Park 1” in Lochside and McAdam Square), spaces outside shops (for example on Main Street in Newton and Main Road in Whitletts), and leftover spaces along the railway lines and motorway.

The analysis maps on the following pages describe the greensapce resources of Ayr North and outline the main assets and challenges.

The analysis maps on pages 16-17 show the extent of SAC ownership in Ayr North. While this information may not be completely up to date in detail, the extent of public ownership suggests that achieving positive change in the area may well be easier than it would be if there was less land in public ownership.



above: Peter Boyle Bowling Club, Craigie



distribution of open space types in Ayr North



greenspace typologies
of Ayr North





Ayr North: greenspace assets and challenges





Ayr North: extent of South Ayrshire Council land ownership





AYR NORTH GREENSPACES

the varied nature of green spaces across the area showing domestic spaces, play areas, civic planting and new spaces



4 EMERGING THEMES

1 The extent of open space:
there is a great deal of open space in Ayr North but much of it, is not particularly useful in terms of opportunities for active lifestyles, habitat creation or basic amenity.



2 Maintenance + security:
upkeep and safety are recurring themes - most places need more care and maintenance whereas some areas could benefit from less or different maintenance regimes.



3 Active living + wellbeing:
promoting healthy activity for all residents but particularly for young people is essential. There is a real need for activities across a broader age range in Ayr North



4

Outdoor activities:

young people and teenagers need outdoor spaces and activity options that are free or cheap such as summer programmes but these need to be organised and that is resource intensive.



5

Softening landscapes:

many outdoor spaces are not inviting and feel very 'hard' without trees or benches to sit on. Making landscapes more comfortable and pleasant is a particular community aspiration.

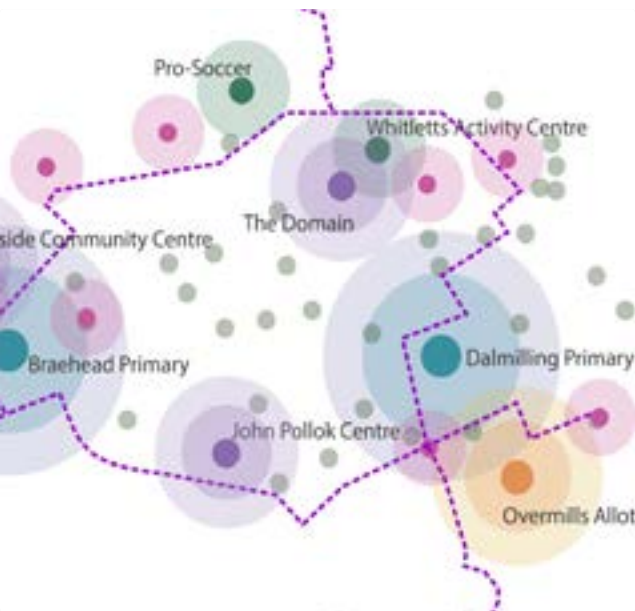


6

Empowering people:

more people need to be involved in creating and managing green spaces as well generating more social enterprises and better communication between each other, the Council and other agencies.





5 TOWARDS A STRATEGY

Our starting point in devising a Making Places strategy for Ayr North is rooted in our experience of community engagement in the area over a period of eight months.

We have taken on board much of what was said to us, but we have also noted much of what was not.

There are exceptionally able groups and individuals working in the area on very localised projects which are making a significant impact - yet these are only small islands of endeavour. Apart from these individuals and groups who are already making an impact, finding other people or areas keen on initiating change has proved to be elusive. Much greater project coverage is required, but this requires substantial financial resources as well as the personal time of key individuals in the community.

Community aspirations in the area tend to focus on the need to fix things - broken fences, litter, holes in the road, dog mess - and while this is necessary and worthwhile, the bigger picture often tends to be ignored or seems unimportant in the face of day-to-day problems.

Sometimes it is valuable to take a broader look at what is possible - even

if it seems a hopeless aspiration in the here and now. With this in mind, we have looked at eight themes and projects from other locations and hope that these might provide a spark of inspiration and new ideas for initiatives in Ayr North.

Ayr North comprises many different communities and different character areas, yet they are all part of a greater whole. Local projects are essential and valuable, but they should fit into an overall structure which makes sense for the whole area, the rest of Ayr and nearby settlements.

The spatial strategy for Ayr North integrates and grows essential community assets in the area to create an integrated network of hubs where the individual elements of a greenspace can develop.

For example:

- schools are focal points in the community and potential starting points for projects as well as the places where environmental awareness and constructive action can start
- opportunities for growing food and flowers can start

at allotments and community gardens but can also lead to benefits in diet, skills development, countering isolation and assisting with dementia

- opportunities for sport are a vital entry point for communities to start healthier living and leading more active lifestyles and so sports centres, schools and playing fields are the immediate focus
- play facilities are vital for healthy living, and active lifestyles as well as being an essential part of an individual's development and so establishing a convenient network of these facilities is necessary
- community centres, hubs and other facilities are also critical elements of the strategy in that they are places of interaction where ideas about future developments are likely to evolve
- smaller greenspaces represent areas with potential where communities could implement new projects such as growing flowers or food, building raised beds, bench seating or information boards - all of these small actions could lead to more significant initiatives.



STRATEGY ELEMENTS

The strategy should:

1. provide an overall direction for the future of all greenspaces in Ayr North – from large area-wide projects to micro-projects in small spaces
2. take a fresh look at future types of greenspaces and potential facilities for the area
3. seek to improve the provision of more outdoor activities for young people
4. help to promote an active lifestyle and well-being for all ensure appropriate maintenance regimes with security and safety
5. suggest ways to empower local people to adopt public spaces and make them more useful

top - Dalmilling Allotments
middle - Dunlop Terrace
bottom - Ayr Racecourse



Strategy Element 1 Schools as focal points



Strategy Element 2 Opportunities for growing



Strategy Element 3

Opportunities for sports



Strategy Element 5

Community hubs



Strategy Element 4

Opportunities for play



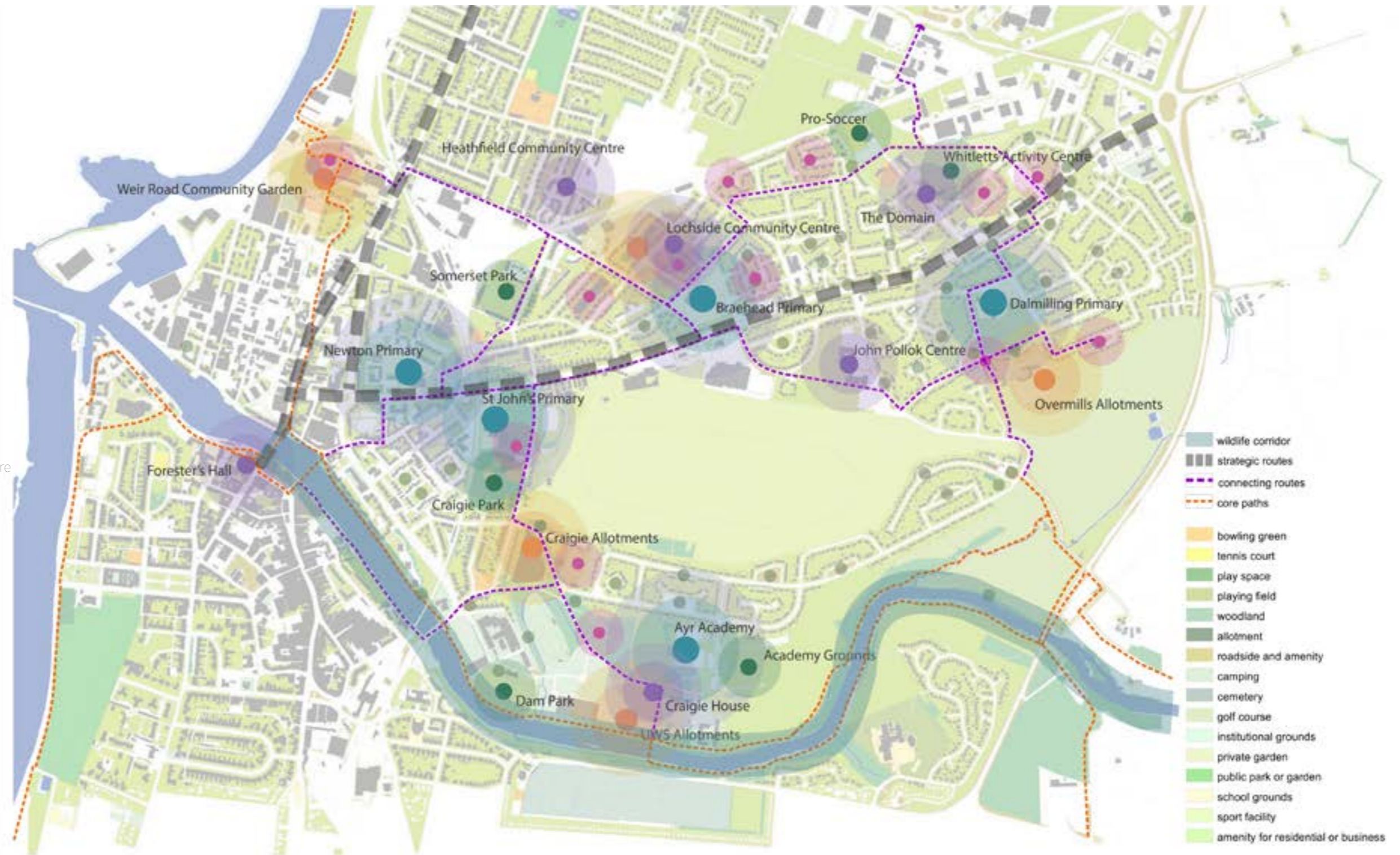
Strategy Element 6

Other green spaces



Strategy Map with:

Core Paths
Local footpaths and cycleways
Strategic routes to Ayr Town Centre
River Ayr wildlife corridor



schools as focal points in communities opportunities for growing opportunities for sports opportunities for play community hubs other green spaces



TOWARDS A STRATEGY:PROJECT THEMES



PROJECT THEMES 1 Ayr North Routes

Developing a local network of local footpaths and cycleways, including improving established routes would be an important step in kickstarting a culture of active travel and healthier lifestyles.

PROJECT THEME 2 Wildlife and Habitat

The River Ayr is already a valuable wildlife resource but could be improved and extended into the surrounding areas of Ayr North. It is an ideal project for communities and will appeal to many age groups.





PROJECT THEME 3 Community Woodland

Community woods bring people together. Adopting existing woodland or starting a new wood can add to the quality of green space and open up access for communities and future generations. Woods are proven to benefit air quality, mitigate flooding, shield noise, improve physical and mental health, and deliver a significant boost to biodiversity.

PROJECT THEME 4 Orchard Project

An orchard helps to raise awareness and understanding of the contribution that physical activity and a good diet, using homegrown organic produce, can make to wellbeing and good health. Orchards create a quiet space away from the hustle of daily life. They serve an aesthetic as well as a productive purpose with links to social enterprise.





PROJECT THEME 5 Adventure or Junk Playground

Adventure or junk playgrounds for children may develop social and problem-solving skills, learning about social responsibility and interacting with others outside of their social circles. Other benefits may include more freedom and choice, promoting a sense of place and fostering creativity through interactions with the natural environment.



PROJECT THEME 6 Micro-parks

Micro-parks promote play, relaxation, and the opportunity to connect with others. Micro-parks provide opportunities to those who would not otherwise have a "green" meeting place for meeting and relaxing. Existing temporarily vacant or dormant sites may offer the opportunity to facilitate a common gathering space for residents and visitors.



PROJECT THEME 7 Courtyard Redesign

Turning underused courtyard 'greens' into good community orientated green spaces could substantially change the quality of many residential areas. Using co-design with communities to establish aspirations for these areas is an essential starting point. Courtyards could accommodate a wide range of features including play, relaxation and planting food crops as well as ensuring privacy for seating through edge definition and hedge planting.



PROJECT THEME 8 Outdoor Gym

Outdoor gyms are popular facilities which are often created as 'indoor gyms outside' with expensive equipment offering a combination of play and fitness. An alternative approach is to develop outdoor gyms that look in part like athletics grounds and provide some of the facilities in scaled-down versions such as a four-lane running track, long jump pits, high jump, pole vault mats and hurdles as shown on the images to the right.



PROJECT THEME 9 Wheel facilities

Wheeled sports such as cycling, BMX, skateboarding, scooters, mountain bikes and in-line skating are growing in popularity with young people. Developing dedicated places where young people can access facilities which encourage wheeled play opportunities improves their skills and confidence and is more stimulating and safer than streets. It is also a place where young people can enjoy themselves without causing a nuisance to others.



PROJECT THEME 10 Play facilities

Good play facilities are important for the development of children. Currently, there is a dearth of innovation or interest in play area design. Local communities should be involved in the location, design and selection of elements of each play area. In this way, communities can begin to take ownership of their facilities, leading to reduced vandalism and improved community harmony.



PROJECT THEME 10
Play facilities (continued)

6 FIRST STEPS + SUPPORT RESOURCES

The following four projects represent examples of how community groups can be helped through the expertise and resources of the Making Places team. This section also summarises other community projects in Scotland and currently available resources

Our eco committee



OVERMILLS
ALLOTMENTS,
DALMILLING

Under the guidance of the Head Teacher, pupils on the eco-committee at Dalmilling Primary have established an allotment at the Overmills site, through twice-weekly sessions for the last year.

The allotment project has been primarily directed pupils, from initial concept and design to planting and maintenance, with help from parents in bed construction and site maintenance during school holidays.

The project is part of a more extensive drive from the school to create a support network and important community

for students and their families, integrated in the school curriculum, with science experiments and broader discussions around physical and mental health all grounded in the allotment project. This holistic education model has allowed the children to develop a great connection with, and understanding of, their environment and the opportunities that it can afford them, building aspiration to improve their place and consider related prospects.

Transforming the area

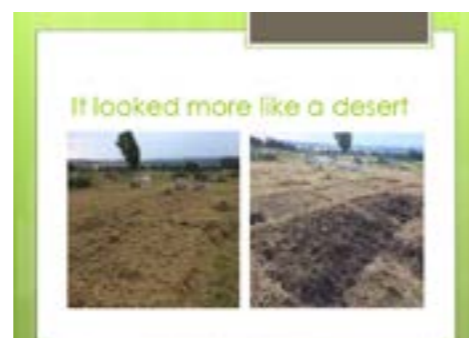
from a weed and wasp-infested site to workable plot was achieved with help from the Council and the local community, with designs for the space visualised by the eco-committee through drawing and collage. Raised beds were built by a community payback team, with money for equipment and appropriate clothing pooled from school fundraisers, successful community fund bids and developing local business links. Finding continuing sources of funding for the project has been highlighted as

The plan is to all have
Allotment time, plant out all of
our seedlings and help them
grow into strong plants.
Maybe get to eat some of our
delicious fruit and vegetables

an issue, with the school unable to provide much financial support. Fiona Mitchell, a former student of the Scottish Agricultural College at Auchincruive, supplies relevant expertise in gardening and growing.

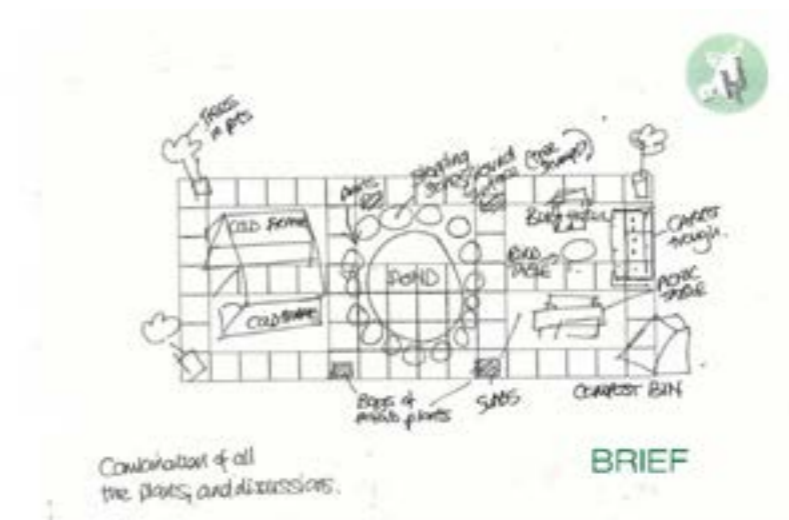
Making the allotment accessible for all is integral to the supportive and inclusive ethos of the project, so the site was made wheelchair-friendly by levelling and paving the area around the beds, and the wider community was invited to engage with it through presentations given by the children. A buddy-up programme between P7 and P1 students helped familiarise new students with the allotment and provide them with confidence to actively contribute to the project. Later, older students evolved into 'allotment managers', responsible for creating watering and maintenance rotas, guiding multiple younger students through the programme while further driving the activity and development of the site. Through involving all classes, including the extended learning facility for children with particular learning requirements, an opportunity for easing the transition from primary to secondary school has been created, as Ayr Academy also run an allotment programme, to which students can bring their knowledge and find familiarity.

In the future, there is the aspiration to expand into a third allotment plot, which would provide space for greater growing capacity, a wildlife pond and a cold frame. Creating links between the school canteen and the allotment could facilitate the production of compost or a wormery, and produce from the garden used in a soup-making project, or no-cook recipes in the classroom, with future fundraising perhaps possible through these means. Developing the existing 'fairy garden' and a herb growing space could serve as a sensory area, for which targeted funding might be available.



KEY ISSUES

Aside from funding, key issues to be overcome are the maintenance and harvesting of the allotment over school breaks, especially over summer, and keeping the momentum of the project going for the students during the school year. Having tangible seasonal outcomes is essential for retaining the engagement of students.



ILLUSTRATIVE
LAYOUT

CRAIGIE GREENSPACE GROUP

Craigie Greenspace is an active community group supporting the Ayr Academy Horticulture Group activities and undertaking regular local litter picking, with aspirations to establish a new play park, a community hub space and replant the Pansy Walk along the River Ayr.

Using the outdoor gym facilities at Northfield Park and Prestwick Beach as precedents, community consultation has been started via Facebook to develop a plan for the proposed playpark, while council contacts are advising on how best to fund it. The costing of and timetable for planting the Pansy Walk is under discussion, with the SAC Grounds Maintenance Co-ordinator providing guidance. There was a desire to use a vacant corner shop unit as a potential location for a community shop and hub, but questions around management, licensing and the potential for a community asset transfer are outstanding. An increase in rates for the use of space at Ayr Academy has been affecting this and other groups, recently forcing them to look for a venue elsewhere and change the timetable of their meetings.

The Council has recently purchased two shipping containers of tools for use by community groups, and these could be made available to the group. The Craigie Cuppa Group and the Men's Club have previously helped fund equipment and events for the Greenspace Group through donations for refreshments provided at their meetings. Better communication between groups across Ayr North, as well as between these and the council, have been flagged up as opportunities to increase the group's capacity and reach.



schools resources in the Craigie Greenspace Area



schools and growing initiatives in the Craigie Greenspace area

FORMER WHITLETTS PRIMARY SCHOOL SITE

An unused green space adjacent to a new housing development on the location of the old Whitletts Primary school has the potential to become a community garden for the new and existing residents in the immediate area.

Initial engagement with residents led to interesting discussions with about the historical use of the site as a garden by the old school, issues with its current use as a thoroughfare and fly-tipping spot as well as concerns over its future capacity as a community space. Following a successful event held on the site, members of a residents' association, the James Brown Action Group, expressed interest in helping to develop a vision for the site. A meeting with this group suggested that there was a greater desire to have a community hub space in conjunction with, if not instead of, a community garden or outdoor gym equipment, as had previously been suggested.

Further meetings were arranged to discuss how the group wanted to move towards becoming an active and constituted body again, and what aspirations they might have for the near and distant future, concerning both the greenspace and the broader area. Complicated group dynamics led to a lack of ability to come to any decisions. This hiatus adversely affected community engagement with the planned projects, but it continues to be a work in progress.



the Flag-raising barbeque event at Whitletts in May 2018

IDEAS



* community gardens in
* community urban



* food growing in containers or raised beds
* active mix-use garden



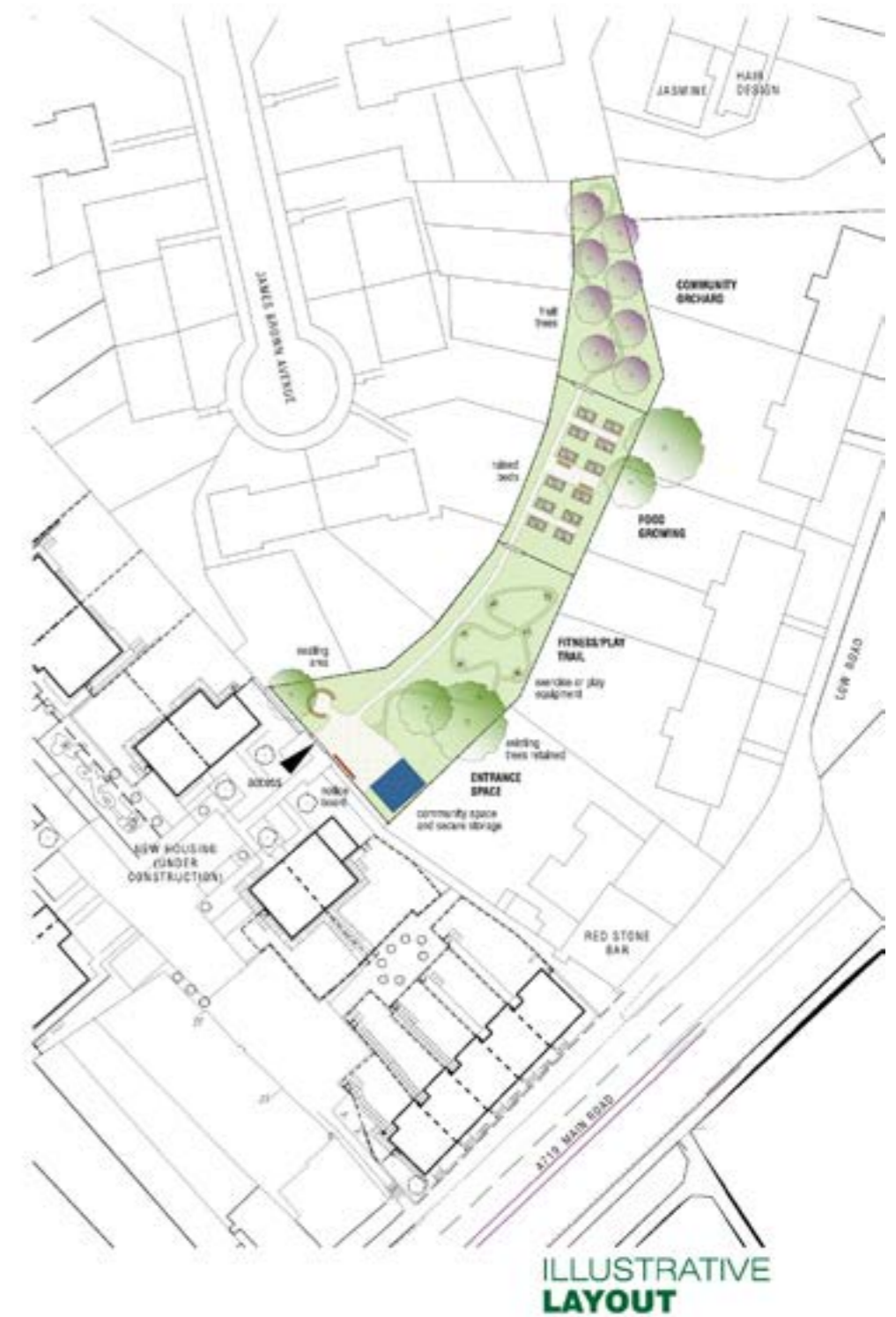
* Bona soil



* gardeners connected to a community space and secure store
* seating area

POTENTIAL
PHASING

left and right:
proposal suggestions for the
site at James Brown Avenue
and former Whitlets Primary
School - phasing and outline
design



WEIR ROAD COMMUNITY GARDEN

The Newton Green Residents' Association is in the process of trying to establish a community garden on a vacant greenspace site on Weir Road. Already a constituted group, there is the hope of leasing, or making a community asset transfer application for the site.

The residents' association envision the creation of a family-friendly neighbourhood garden and growing space - somewhere they can spend time, hold community events and make forays into producing food, flowers and trees. A presentation from members of the well-established Girvan Community Garden at an earlier meeting helped the group to realise the potential of their green space and shape aspirations for its design. A phased approach to progress was considered to

be the most appropriate approach for such a large site.

Gathering a stable core of local people behind the project was initially challenging, but an open meeting in a nearby church hall allowed for productive discussions about the future of the space, creating a sense of community cohesion around the project's development.

The group hope to rally the community around the garden vision through better utilisation of social media and physical noticeboards, involving the local school both in making banners and in future design workshops, and tapping into the resources of local businesses. In this way, they aspire to 'Put The Green Back Into Newton Green'.



meeting with Newton Green Residents' Association to discuss Weir Road improvements



Weir Road
Community Garden:
Project ideas and phasing





Community greenspace initiatives in Ayr North could benefit from contact with several organisations in the Ayr area who all have experience of developing and operating similar projects.

There are at least ten of these projects in South Ayrshire, East Ayrshire and North Ayrshire Council areas. For locations, see the map of Ayrshire to the right.

Elsewhere in Scotland, there are well-developed projects that have enjoyed considerable success. For locations, see the map of Scotland below.





relationship hierarchy between existing and developing projects in Ayr North, the wider peer greenspace area and exemplary projects and resources across Scotland.





Ayr North Workshop:
21 November 2018

7 CONCLUSION + RECOMMENDATIONS

This report is the result of nine months' work in Ayr North. The headline findings from the report are:

- there is an enormous amount of greenspace in Ayr North but much of it is underused and not fulfilling its potential
- the extent of publicly owned land is an asset which could make the implementation of proposals easier
- there are many good things happening in Ayr North, but they are focused on a few hubs and enabled by just a few individuals and groups
- a handful of people are making the difference – children, schools and older people together with a few community groups and Ahead's team of Community Builders - further work is needed to foster a more widespread community desire to get involved in greenspace provision or care

This report has proposed a spatial strategy that sets out the most effective locations for projects. The core proposal is to focus support on the existing centres of excellence where positive initiatives are either happening or in the making. These are at:

- Lochside Community Centre

- Dalmilling Primary/Overmills Allotments
- Weir Road/Newton Green Residents Association
- Whitletts/James Brown Avenue Group
- Craigie Greenspace Group

The proposal is to support and grow the work of these centres out into surrounding areas and start to reach more people, stimulate interest and achieve wider coverage of greenspace projects. Other organisations may emerge in the future but for now, supporting and extending the work of these groups represents the best way forward for the development of placemaking through greenspace initiatives in Ayr North.

The report also suggested a range of project themes for Ayr North including potential types of greenspace initiatives at a local scale and at an area-wide scale. These ranged from community woodlands, orchards and play areas to strategic footpath and cycleway links and wildlife corridors.

The resourcing of expertise in the local area, in the surroundings of Ayr and in Scotland was addressed as was a comprehensive list of funding sources for greenspace projects.

The report also acknowledges that there are some key challenges and themes for the future direction of the project, namely:

- how do we get more people interested?
- how do we broaden the age groups involved?
- how do we resource this?

PLACEMAKING ACTION PLAN WORKSHOP

These questions formed the agenda for a Placemaking Action Plan workshop held on 21 November 2018. This was the final piece of engagement for this Making Places project and it was attended by representatives of the Ayr North communities, South Ayrshire Council departments, the Ahead Community Builder team and other interested parties.

KEY CHALLENGES AND THEMES

The workshop set out the key challenges and themes for the future direction of the project. These included important questions such as:

- How do we foster a 'can do' approach in the community?
- How do we garner funds for activities/resources?
- We should link produce growing with a production outlet i.e. school kitchen.
- We need to encourage fundraising for the developments.
- We could host a Green space learning event/workshop.

- Schools are ideal hubs to provide structure and opportunities for engagement.
- We should have greater link to GP practices – social prescribing – perhaps through Locality Planning Groups
- There should be a co-ordinated strategic approach to use of greenspace in Ayr North
- Lots of spaces have been identified but some of these may be earmarked for other uses
- Wider community engagement is required – need to get feedback and involvement from people who are not engaged in established groups.

SHORT TERM

The discussion responses were wide ranging and included detailed project ideas as well as wider issues. Participants addressed a range of short-term moves:

- Establish what the community think are valuable spaces – at a micro/local level.
- Content House Wallacetown – possible use for a community garden?
- Make very small changes in local areas – eg places to sit/small areas of planting
- Aesthetically improve local green space by putting in tubs/shrubs/flowers etc.
- Identify key individuals to formulate steering/planning group
- Connect with other active and likeminded groups
- Litter pick/clean up days.
- Blether Shed (AAMH) Growing skills, social skills, meetings and food
- Whitletts Clean-up day
- Domain Sensory Group

- Lochside Environmental Campaign (including clean-up days and garden improvement scheme)

MEDIUM TERM

Medium term proposals included:

- Creating a framework in local areas which will help the community to develop their ideas.
- Kyle Academy Garden Project
- Dalmling Primary (Overmills Allotments)
- Planting Trees (Orchard development)
- Capacity building of Community Organisations (Funding Sources)
- Support and training for communities

LONG TERM PROJECTS

Long term projects and ideas included:

- Cycle/Walk –Avenue Path networks.
- Installation of benches, local artwork/Topiary/bee keeping/protection/wild flowers/localised historical features.
- Fairy Walk/Riverside Walk.
- Lighting along University Ave.
- Active Gyms/Play parks.

GRANTS AND PROJECT FINANCE

Discussions and ideas about the availability of grants and project finance included:

- Pursue Community Benefit Scheme which offer supply of equipment (litter picking) co-ordinated by Community

Engagement team.

- Craigie has a small pocket of funding that may be tapped into from local groups.
- Costing's: Link with Garden Centre for potential donations.
- Participatory Budgeting Funding.
- Explore external funding streams
- Need to use community benefit more widely to encourage small pieces of work in local communities.

PARTNERSHIP WORKING

Finally, the workshop explored some ideas about partnership working and the organisations that might lead different projects:

- Ahead/Craigie Green space Group/SAC/Elected Members.
- Horticultural Group/students/college/residents/University/SAC/Forestry Commission National Societies/ Host organisations regarding funding of pop-up action groups.
- Community Groups
- Business Associations
- SAC-Parks
- Networking of local groups and resources
- Three Towns Project, Dalmling Church, Ahead
- Newton Primary, South Craig School. Open to any other groups
- WAAG, Community Safety,



Waste management, Ahead, residents

- CLD, Ahead, Princes Trust
- Community Safety, Waste management, Ahead, Braehead Primary, LNG, residents
- WAAG, SAC, Ayrshire Roads Alliance
- NACC, LPG, WAAG, LNG, WAG, Tenants & Residents
- Inter-departmental communication eg Planning needs to understand what community aspirations/estates aspirations are. Need more of a systematic process.

The report and the outputs from the workshop represent a firm foundation for increased levels of project work and community initiatives in Ayr North. It is recommended that the strategic elements of the proposals are incorporated in the Local Development Plan. It is likely that this work can accelerate with the future emphasis on Locality Planning and on Local Place Plans which could begin to make a community driven greener environment a reality for Ayr North.



APPENDIX A: EXPERIENCE ELSEWHERE

GIRVAN COMMUNITY GARDEN (GIRVAN, SOUTH AYRSHIRE)

The garden's transformation from overgrown and neglected tree nursery to active community hub over the last ten years has led to it now becoming a company limited by guarantee and with charitable status, supporting community well-being and better health through gardening. Initially, the project relied heavily on volunteers, who are still the backbone of the community garden, but now have support from local tradespeople and various regional to national organisations, as well as two paid staff following a Big Lottery Fund win.

With diggers on site, including hosting a Lantra Digger Training Course, and volunteers rolling up their sleeves, there was early progress. Materials and plants provided by the Woodland Trust and through the local Dobbies 'Helping Your Community Grow' scheme helped to give the garden some shape, before it became part of the Beechgrove Garden Community Gardens project in July 2010. The Beechgrove team helped with design ideas and raised the profile of the garden, complementing the plant sales, schools competitions and



Girvan Community Garden

workshops already being undertaken by garden volunteers. These workshops not only helped clear and develop the site, but also provided training opportunities and qualifications for local people.

Since then, building small structures such as a geodesic dome and compost toilet, hosting regular events on the site and participating in national activity schemes have kept up local interest in the project and maintained an active volunteer core, with a variety of funding sources used.

julie@girvancommunitygarden.com

THE CONCRETE GARDEN (POSSILPARK, GLASGOW)

Industrial contamination left the site of this garden unsuitable for growing food, but the fact that it had been concreted over in the 1950s made it a perfect demo site for Sow and Grow Everywhere, a project based around movable raised beds in grow bags. Four years from its initiation, the garden includes a ‘mobile orchard’, with fruit trees grown in wheeled barrels, and a chicken coop built from an old shed for five ex-battery hens. Workshops and cookery courses attract new faces, with after-school clubs for primary children among other activities taking place.



top
Girvan Community Garden

bottom:
Concrete Garden, Glasgow

facing page:
Woodlands Community Garden,
Glasgow



‘It might not strike you as a good space for growing,’ says Garden Development Worker Paula McCabe, ‘but it has worked well. Many areas around Possilpark rank worryingly high on indices of poor health and deprivation. It’s an area where people have not had the opportunity to engage properly with food. Food banks are opening up on a regular basis and fulfil a need, but at the same time are incredibly disempowering. Community food groups are coming at it from the more radical direction of people reclaiming control.’

info@concretetogarden.org.uk

WOODLANDS COMMUNITY DEVELOPMENT TRUST
(WOODLANDS, GLASGOW)

Woodlands Community Development Trust is a registered charity concerned with the long-term regeneration of the Woodlands area of Glasgow – its economy, its environment, its facilities and the ‘spirit’ of Woodlands. Community-based and accountable – in work, style and the composition of its board of management, WCDT supports local people in shaping the future of Woodlands in ways that are sustainable, environmentally friendly and innovative. Key aims include supporting community-based education activities, promoting the health and well-being of our community, encouraging participation in community arts and the advancement of environmental protection.



Woodlands Community Garden is the main project. Since 2010 WCDT has transformed a derelict urban gap site into a thriving community garden and “outdoor community centre”. The garden has over 50 raised beds where local people can grow food, with beds allocated on an annual basis. For people who don’t have a raised bed, there are still plenty of opportunities to get involved, including twice-weekly volunteer sessions and monthly community cleanups. A free vegetarian community café takes place on Monday evenings, feeding an average of 60-70 people per week, with meals cooked using fresh ingredients including those grown at the community garden. Regular cookery workshops are run both at the cafe and in partnership with other local organisations.

woodlandscommunitygarden@gmail.com



DEVERON PROJECTS: THE TOWN IS THE GARDEN (HUNTLY, ABERDEENSHIRE)

The Town is the Garden is a community food growing project begun in 2017 by Deveron Projects, building on their “The Town is the Venue” ethos. Through this they work and contribute to the social wellbeing of Huntly, inhabiting, exploring, mapping and activating the town through artist-driven projects. The project is run by two gardeners in residence and a green coordinator, aiming to explore potential futures for food production and change people’s relationship with food for the better.

Part of this is The Gift / Swap / Share shop, an honesty shop with a difference, attempting to deal with gluts of food, excesses in production and harvesting wild



food in season. It is about creating a community of exchange, an alternative economy. People bring along whatever they have spare to add to the shop - whether it is a glut of beans or a jar of chutney - then take what they want and pay what they can (if anything). Any donations left are re-invested in the garden or donated to the local food bank.

The project team have also started experimenting with making planters, to improve the town’s appearance and build relationships with local businesses. These can be filled with bedding plants or edible ones, again encouraging the responsible sharing of resources within the community.

info@deveron-projects.com

INCREDIBLE EDIBLE NETWORK (NATIONAL)

The community is at the very heart of Incredible Edible’s work, and its growing patches are attractions which get people talking. From its inception, Incredible Edible sought to show how ordinary people can transform their landscapes and turned disused plots into abundant sources of healthy food. Incredible Edible believes reviving hands-on knowledge of food is essential for the future.

Schools are natural places to start, with food playing an increasingly important part of the curriculum. The organisation works with schools and their gardening clubs to pass on skills and get them growing. However, learning doesn’t end at the school gates, and groups across the country also provide training through adult gardening clubs, training courses and workshops such as chutney making, pickling and frugal cooking.

Example project: Incredible Edible Bristol’s Bearpit Garden <https://www.incredibleedible.org.uk/news/a-haven-for-well-being-bristols-bearpit-garden/>

<https://www.incredibleedible.org.uk/>



IRVINE BAY GREEN NETWORK (IRVINE, NORTH AYRSHIRE)

Working in partnership with the Forestry Commission Scotland (FCS), RSPB and Greenspace Scotland, Irvine Bay Regeneration Company sought to develop a framework for the delivery of green network projects. In 2010, it received a £20,000 grant from the CSGN Development Fund for the creation of an Irvine Bay Green Network Strategic Action Plan. It commissioned a study to analyse five different types of underused land and to consider proposals to enhance the environmental and community benefit of these spaces. The sites included derelict industrial land, open beach space, large development sites and land with high amenity value.

A detailed and costed Action Plan considered the feasibility of several options including temporary greening, short rotation coppicing, wetland creation, wildflower planting and path and access improvement. It sought to engage the wider community and to encourage the active use of green space in and around Irvine Bay, with the Irvine Bay Regeneration Company commencing work in August 2011 on a series of projects to deliver some of the ideas presented in the Irvine Bay Green Network Strategic Framework.

The project encourages outdoor recreation and active travel through investment in access routes and good quality green spaces, engaging residents and stakeholders, engendering pride in the project and helping to develop a sense of

ownership of the local environment. It provided a boost to the economy of Irvine Bay by working with local contractors, and by providing valuable training and work experience for local young people who were previously unemployed. The project has also improved the biodiversity of the area by planting wildflowers, trees and shrubs all with local provenance, improving wildlife corridors and helping to create an integrated habitat network.

mfrancis@irvinebay.co.uk



SKELMORLIE PRIMARY SCHOOL (SKELMORLIE, NORTH AYRSHIRE)

A successful Lottery Funding appeal enabled Skelmorlie Primary School to build 21 raised beds that can be accessed by all, as well as an Eco Greenhouse and a polytunnel. Now every child at Skelmorlie Primary School is involved in the garden, and every class has their own raised bed.

As part of the Lottery grant, the school agreed to rent some of the remaining beds to the local community, so application letters are sent out every April with priority booking for those already renting. To date, every bed has been taken, and the school includes one free top-up of school-produced compost in the annual £25 cost. As well as bringing in revenue, this also means that there's a small team of helpers on hand to take care of the garden during the school holidays.

The school regularly consults pupils and staff on plans and planting rotations. They also have a clear vision of how the garden will develop over the next three years. Plants are used around the school to make the grounds more attractive, and the newly planted willow tunnel in 'Mr. Mac's Sunshine Garden' is always popular. With the aim of becoming food producers and gardeners, they've also planted an orchard and a fruit bush garden. Having decided that from now on most of their crops will be for their own consumption, the school has established a Food for Life Action Group with the help of the Soil Association. Members are hoping to persuade the North Ayrshire Council to purchase crops for school meals and the school's new salad bar. Pupils are also keen to get cooking themselves and plan to learn how to cook healthy meals alongside the North Ayrshire Catering team.

skelmorlie@ea.n-ayrshire.sch.uk



THREE TOWNS GROWERS/ ELM PARK
COMMUNITY GARDENS (ARDROSSAN, NORTH
AYRSHIRE)

Three Towns Growers was born out of a movement in North Ayrshire to increase the availability of community allotments in the area. A group of gardening enthusiasts answered a call to action in the local paper and set about creating a group that would form the first allotment site in the Three Towns area. The group was constituted in 2013 and opened Elm Park Community Gardens and Allotments three years later.

Since opening the allotment site, Three Towns Growers has evolved into an organisation committed to promoting sustainability in the lives of local people through the medium of gardening and related activities. Elm Park Community Gardens now offers 50 allotments plots, 50 raised beds and a community polytunnel for community members to rent growing space for a small yearly fee. Three Towns Growers offer an extensive workshop and activity program, all at an affordable cost with special deals for members, and work in partnership with other local community groups and schools to promote food growing in the school curriculum. Three Towns Growers work to improve biodiversity in their site and the surrounding park and work with partners to ensure the maintenance of environmental quality for all residents of the area.

secretary@threetownsgrowers.org



GARNOCK VALLEY MEN'S SHED (GLENGARNOCK,
NORTH AYRSHIRE)

The Garnock Valley Men's Shed is one of the first recipients of North Ayrshire Council's brand new pioneering Community Investment Fund (CIF), which will enable the group – set up in January 2018 – to develop their building and help with the running costs of a challenging and eventful first year.

The Men's Shed movement promotes general wellbeing, continuing education and healthier lifestyles for men in the community who want to use their time constructively. It provides free workshop space, tools and materials; music tuition; therapeutic woodwork courses; free bike repairs through Big BikeRevival funding (Cycling UK); model building workshops; free family sports and leisure opportunities with free food through ParkLives initiative and distribution of free food through Greggs unsold food donations. The underlying ambition is to tackle inequality by reaching out to isolated or hard to reach groups of men.

shawian21@hotmail.com

OTHER INITIATIVES:

Granton Community Gardeners
<http://www.growyourownsotland.info/case-studies/granton-community-gardeners/>

Lambhill Stables Allotments
<http://www.lambhillstables.org/>

Growing Kirkcaldy
<https://www.keepsotlandbeautiful.org/media/1559501/growing-kirkcaldy-portfolio-2017.pdf>

Netherthird Community Garden
<https://scotlandsgardens.org/netherthird-community-garden/>

The Knowe Garden Centre
<https://www.facebook.com/TheKnoweGardenCentre/>

Friends of Possilpark Greenspace
<https://sites.google.com/site/possilgreenspace/Home/about-us>
<https://esmeefairbairn.org.uk/possilpark-greenspace>

LINKS TO USEFUL ORGANISATIONS:

FCFCG <https://www.farmgarden.org.uk/your-area/scotland>

Keep Scotland Beautiful <https://www.keepsotlandbeautiful.org/local-environmental-quality/its-your-neighbourhood/>

John Muir Trust
<https://www.johnmuirtrust.org/>

Scottish Natural Heritage
<https://www.nature.scot/>

Royal Horticultural Society
<https://www.rhs.org.uk/>

Groundwork
<https://www.groundwork.org.uk/>

Greenspace Scotland
<https://www.greenspacescotland.org.uk/>

The Conservation Volunteers
<https://www.tcv.org.uk/>

Central Scotland Green Network
<http://www.centalscotlandgreennetwork.org/>

The Tree Council
<https://www.treecouncil.org.uk/>

Woodland Trust
<https://www.woodlandtrust.org.uk/about-us/where-we-work/scotland/>

National Trust for Scotland
<https://www.nts.org.uk/>

Incredible Edible
<https://www.incredibleedible.org.uk/what-we-do/>



APPENDIX B: FUNDING SOURCES

Who for?	Funding body	Amount available	Deadline	Only in isolation?	Time limit of use	Notes	Contact	Web link
Constituted groups	Scottish Landfill Communities Fund via SAWET	up to £10000	Reopening early 2019	Y	12 months	Fund to support community, environmental and heritage projects around landfill sites and transfer stations.	marion.young@south-ayrshire.gov.uk / sawet@south-ayrshire.gov.uk	https://www.sepa.org.uk/environment/waste/scottish-landfill-communities-fund/looking-for-funding/#funder
Any community group	Scottish Landfill Communities Fund via FCC Scottish Action Fund (WREN)	£2,000-£100,000	12.12.18, then 26.12.18 > 13.03.19	N	Funding agreement issued within 6 months, completed and funding claimed within 12 months	Fund to support community, environmental and heritage projects around landfill sites and transfer stations. Projects must be owned, leased or under long term formal management agreement by the applying organisation. Any lease or management agreement must be in place before any application is made and have at least 5 years left to run. max total project cost £500.000.	01953717165/ info@wren.org.uk	http://www.wren.org.uk/apply/fcc-scottish-action-fund
Constituted groups	People's Postcode Lottery: Postcode Local Trust	up to £2000	Reopening early 2019	N	12 months	Postcode Local Trust will consider projects that improve biodiversity and outdoor spaces. Funding required must be more than 10% of the overall project cost.	info@postcodelocaltrust.org.uk	http://www.postcodelocaltrust.org.uk/applying-for-a-grant
Any community group	Action Earth Grants (SNH)	£50 - £250	-	N	Costs must be submitted up to 4 weeks before project end date	Any group of volunteers can apply for Volunteering Matters Action Earth Grants, to run environmental activities in Scotland's green spaces. This could include creating or improving community gardens, wildflower meadows, ponds or woodlands. Must involve practical outdoor activity; at least 15 volunteers must be involved, giving a minimum of 5 hours each; sites to be worked on must be accessible to the general public.	0131 622 7766 / robert.henderson@volunteeringmatters.org.uk	https://volunteeringmatters.org.uk/project/action-earth/
Constituted groups	Foundation Scotland Express Grants	£500 - £2,000	-	N	12 months	Express Grants can help meet a wide range of costs, including general running costs such as rent or staff salaries; activities and events; equipment or materials; marketing and awareness-raising initiatives and training.	0141 341 4960 / grants@foundationscotland.org.uk	https://www.foundationscotland.org.uk/grants-and-funding-for-organisations/grant-programmes/express-grants/
Constituted groups	Big Lottery Fund: Community Assets	£10000 - £1m	Rolling basis	N - encourage match-funding in applications, we can fund up to 100% of activity costs, including staff, training, volunteer expenses, equipment, premises costs, evaluation and overheads.	Can apply for up to five years funding - capital funding (such as building or refurbishment costs), revenue funding (such as salaries and running costs) and the cost of acquiring an asset.	Focused on helping local communities to address specific inequalities or disadvantages through ownership of an asset. Applicants need to show clear evidence that they have consulted with their communities, considered various options to meet their needs and selected the best option to address this. Funds work that is people-led, strengths-based and connected. Provides longer term funding that offers community-led organisations stability to deliver great work, can apply for up to five years funding. Capital funding (such as building or refurbishment costs), revenue funding (such as salaries and running costs) or the cost of acquiring an asset.	advicescotland@biglotteryfund.org.uk / 0300 123 7110	https://www.biglotteryfund.org.uk/funding/programmes/community-assets#section-1



Who for?	Funding body	Amount available	Deadline	Only in isolation?	Time limit of use	Notes	Contact	Web link
Constituted groups	Big Lottery Fund: Scottish Land Fund	£10000 - £1m	Rolling basis	N - average contribution to eligible project costs 80%, can fund up to 95%. Minimum 5% of funding should come from other sources.	Can apply for up to two years funding. Minimum 2 year business plan required.	Supporting urban and rural communities to become more resilient and sustainable through the ownership and management of land and land assets. Awarded to projects that aim to: achieve more sustainable economic, environmental and/or social development through ownership of land and buildings; have a stronger role in and control over their own development; own well managed, financially sustainable land and buildings. This is to be a geographic community as opposed to a community of interest.	advicescotland@biglotteryfund.org.uk / 0300 123 7110	https://www.biglotteryfund.org.uk/funding/programmes/scottish-land-fund
Constituted groups	Big Lottery Fund: Grants for Community-Led Activity	£10,000 - £150,000	Rolling basis	N - can fund up to 100% of the costs of activity including staff, equipment, premises costs and overheads. We will mainly offer revenue funding, but can also consider minor capital work (up to £50,000)	Can apply for funding for between three and five years to improve or continue existing services, or to develop new activity	This funding aims to support communities to improve the places in which they live and the wellbeing of those most in need. We will fund organisations to deliver work where everyone in the community has the opportunity to influence and get involved in community-led activity, and where people in the community are better connected and work together to improve their well-being.	advicescotland@biglotteryfund.org.uk / 0300 123 7111	https://www.biglotteryfund.org.uk/funding/programmes/grants-for-community-led-activity#section-1
Constituted groups	Groundwork + greenspace scotland + Tesco Bags of Help	£1000 - £4000	-	N - can fund 100% of project costs so you do not have to have any match funding. However, if additional funding is secured, there is no limit to what this amount can be	12 months	Funds a wide variety of projects that bring benefits to their local communities. Schools are also eligible to apply. No match funding required. Current turnaround 6 months.	0121 237 5780 (Groundwork) / helen.stockham@greenspacescotland.org.uk. Tel 07884 495455	https://www.groundwork.org.uk/Sites/tescocommunityscheme/pages/Category/boh-grant-for-project-tes



Who for?	Funding body	Amount available	Deadline	Only in isolation?	Time limit of use	Notes	Contact	Web link
Any community group	Greenspace Young Placechangers Ideas Fund	Seed corn: up to £500, Ideas Fund up to £3000	S.C.: rolling basis, I.F.: 26 February 2019 then 4 June 2019	Y	S.C. 3 months, I.F. 7 months	The Young Placechangers Ideas Fund supports Youth Groups to engage with others in their communities to take action to improve the environmental quality, biodiversity, playability and vibrancy of neighbourhoods. The Young Placechangers Programme encourages the use and builds the capacity of young people to make use of Community Placemaking and the Place Standard.	angela.houghton@greenspacescotland.org.uk / 01786 849757 / 07776 526711	https://www.greenspacescotland.org.uk/young-placechangers-ideas-fund
Constituted groups	Aviva Community Fund	Up to £25,000 (first 1,000 submissions from Aviva customers are guaranteed £200 if they don't otherwise receive an award)	12 noon 09.10.2018	N - partnership with Crowdfunder Ltd	12 months	Project should create, make, change, buy or otherwise be intended for the greater good of the community.	communityfund@aviva.com	https://www.aviva.co.uk/services-and-support/more-from-aviva/aviva-community-fund/
Constituted groups	Bank of Scotland Grants Programmes	£1,000 - £100,000	Rolling basis (next round open 22nd Oct, closes 3rd Jan)	N - no requirement for match funding	12 months	The overall objective is to determine whether your application is fulfilling the Foundation's main aim which is 'to support people and their local communities'. Must be a charity registered in Scotland with OSCR to apply. If unsuccessful, charities must leave at least one year between applications.	0131 300 9006	https://
Constituted groups	Screwfix Foundation	up to £5,000	Review dates: February, May, August and November			Supports projects that relate to the repair, maintenance, improvement or construction of homes, community buildings and other buildings	foundation@screwfix.com	https://www.screwfix.com/help/screwfixfoundation/
Any community group	Jewson Community Prizes	£500 - £10,000	Nominations open 9 April to 9 May 2018	N		Competition-based fund for renovation projects for community causes	buildingbettercommunities@jewson.co.uk / 0800 197 8102	https://www.
Constituted groups	People's Health Trust Active Communities	£5,000 - £50,000	Opening 19 Feb 2019	N - groups can have match funding but it is not a requirement	24 months	For small and local projects, genuinely designed and run by local people	apply@peopleshealthtrust.org.uk / 020 7749 9100	https://www.peopleshealthtrust.org.uk/apply-for-funding
Charities	Corra Foundation Henry Duncan Grants	£200 - £7000	Rolling applications	N	12 months	Henry Duncan Grants support charities registered and operating in Scotland which have an annual income of less than £500,000, and are delivering programmes or services clearly focused on improving the quality of life for people who are experiencing disadvantage.	hello@corra.scot / 0131 444 4020	https://www.corra.scot/grant-programmes/henry-duncan-grants/



Who for?	Funding body	Amount available	Deadline	Only in isolation?	Time limit of use	Notes	Contact	Web link
Engagement groups	Green Infrastructure Fund	Total eligible project costs minimum £650,000 - ERDF grant minimum £250,000	28 January 2019	N	Approved project lifetime (max 3yrs)	£0.5 million of ERDF funding through a competitive selection process for an intended 10-15 projects. Primarily a revenue fund to support the employment of staff or contractors to work with communities. The aim is to help communities to make better use of their greenspace, or to develop their own proposals on how it could be improved. Projects must be located in population areas of 10,000 or more, and in the 20% most deprived areas according to the SIMD *see screenshots. The total eligible project costs must be a minimum of £650,000. Projects must be seeking an ERDF grant of a minimum of £250,000. The maximum threshold for grant is 40% for projects in the Lowland and Uplands (LUPS). Applications must meet RIBA (Royal Institute of British Architects) Stage 3. This means that projects should be at a well-developed stage and costs justified.	greeninfrastructure@snh.gov.uk	https://www.greeninfrastructure.scot/green-infrastructure-fund
Engagement groups	Community Food and Health (Scotland) Annual Development Fund	£500 to £3000	Currently closed		12 months	Open to groups and agencies working with or within low-income communities throughout Scotland that would like to tackle one or more of the barriers to healthy eating, such as affordability or availability, and the negative impact of culture and lack of food skills	0141 414 2890 / nhs.HealthScotland-CFHS@nhs.net	https://www.
Constituted groups	Community Learning Exchange Fund	up to £750 expenses	March 2019	-	-	An opportunity for communities to learn through the exchange of ideas and the sharing of common solutions. Open to any constituted community group that is either a member of an SCA member network or has been vouched for by a designated member of staff of a network as an appropriate applicant to the Exchange. The Exchange is also open to community councils.	exchange@	http://www.
Constituted groups	Prince of Wales Charitable Foundation Small Grants	up to £5000	February, May, July and October	N	12 months	The small grants programme supports grassroots community-based projects. Open to UK registered not-for-profit organisations that have been in operation for at least two years.	020 7930 4832	https://www.princeofwalescharitablefoundation.org.uk/apply-for-a-grant/criteria
Constituted groups	SVCO Community Capacity and Resilience Fund	£1000 - £5000	26th October 2018, reopening summer 2019	Y - small grants are looking to deliver new services/approaches or add capacity to deliver existing services	9 months	Looking to support a broad range of projects and activities that support local community based organisations across Scotland to help people mitigate the effects of welfare reform by providing them with the support and skills they need. Open to applications from third sector organisations based in Scotland and delivering services in Scotland, with an annual income of £250,000 or less. The earliest start date for successful projects is 1st December 2018. Projects under criteria 1-3 must be completed by 30th September 2019 at the latest and should be for up to 9 months. Projects under criteria 4 must be completed no later than 31st December 2019	capacity@scvo.org.uk / 0141 465 7537	https://scvo.org.uk/post/2018/09/06/community-capacity-and-resilience-fund-guidance-notes



Who for?	Funding body	Amount available	Deadline	Only in isolation?	Time limit of use	Notes	Contact	Web link
Charities	Scotland's Gardens Scheme's Guest Charity Grant	up to £5,000	31st December 2018		12 months preferable	Guest Charity Grants will provide funding for projects that are concerned with the physical, mental and emotional well-being of adults and/or children across Scotland. These projects should be associated with gardens and gardening and the positive impact that they bring to health and wellbeing.	grants@scotlandsgardens.org	https://scotlandsgardens.org/annual-guest-charity-grant-2019-application/
Any community group	Helping Your Community Grow	Various plants and gardening equipment	Applications open March - June annually	N	-	Plants and gardening equipment for good causes. Offers products, equipment, support and help (but not cash donations) to revamp any outdoor space to make it a wonderful space to spend time, grow produce and have fun, working closely with groups to deliver most appropriate resources.	community@dobbies.com	https://www.dobbies.com/about-dobbies/dobbies-in-the-community/helping-your-community-grow/
Any community group	Woodland Trust	Free tree pack (15-420)	2x annual delivery, November/ March	N	-	Free trees for schools and communities	communitytrees@woodlandtrust.org.uk	https://www.woodland-trust.org.uk/plant-trees/free-trees/
Schools	Learning Through Landscapes: Local Schools Nature Grants	up to £500 worth of resources + 2hr training session	4x annually, next 30th November 2018	N	-	Scheme is looking for schools whose learners are aged 5+ and are passionate about making environmental improvements for the benefit of their pupils, staff and the community. Programme only open to schools, applicant must be employed by school.	cjessop@ltl.org.uk	https://www.ltl.org.uk/naturegrants/guidance.php
Any community group	The Tree Council: Community Trees / Orchard Windfalls	Tree planting costs between £100 and £700	31 March 2019	N	-	The Tree Council has funds available to assist community groups proposing to undertake well-planned tree planting projects during National Tree Week (24th November - 2nd December 2018), or as soon as possible afterwards. The community group must be able to raise 25% of planting costs. Children under the age of 16 must be actively involved in the planting process.	info@treecouncil.org.uk	https://www.treecouncil.org.uk/Grants/Community-Trees
Any community group	B&Q in the Community	-				Scheme in place to donate unsellable products and materials for re-use by local schools, other educational institutions and community groups, for the benefit of the local community and the environment. Local charities can also apply for support directly to their local branch.	012 9288 6644 (B&Q Ayr)	https://www.diy.com/corporate/community
Any community group	BT Community Web Kit	-				Free website building service		https://www.btck.co.uk/Default.aspx
Any community group	MyPark.scot Crowdfunding Resource	-				Crowdfunding platform/ resource for greenspace projects	info@mypark.scot	https://www.mypark.scot/get-involved/crowdfunding-resource/
Any community group	RHS Online Resources	-				Find appropriate plants for any area/ conditions www.rhs.org.uk/rhsplantselector ; Find out where you can purchase a plant locally www.rhs.org.uk/rhsplantfinder ; Browse the list of plants for pollinators www.rhs.org.uk/plants-for-pollinators ; Grow Your Own www.rhs.org.uk/growyourown ; Wildlife gardening www.rhs.org.uk/Wildlife-and-thegardener ; Find out how wildlife friendly a garden is www.wildaboutgardens.org.uk ; Advice by topic of choice www.rhs.org.uk/advice ; Sustainable gardening www.rhs.org.uk/Gardening/Sustainablegardening ; Gardening events www.rhs.org.uk/rhseventfinder/ ; What to do in your garden this month www.rhs.org.uk/Gardening/calendar ; Working with schools www.rhs.org.uk/schoolgardening	gardeningadvice@rhs.org.uk ; communities@rhs.org.uk	https://www.keepsotlandbeautiful.org/media/459458/benefits-resources-for-groups-scotland-.pdf
Any community group	Community Shares	-					0131 220 3777	http://communityshares-scotland.org.uk/



Scottish Government
Riaghaltas na h-Alba
gov.scot